



REILLY J. RYAN

T.D/DRAFTING PORTFOLIO

DIALOGUES DES CARMÉLITES

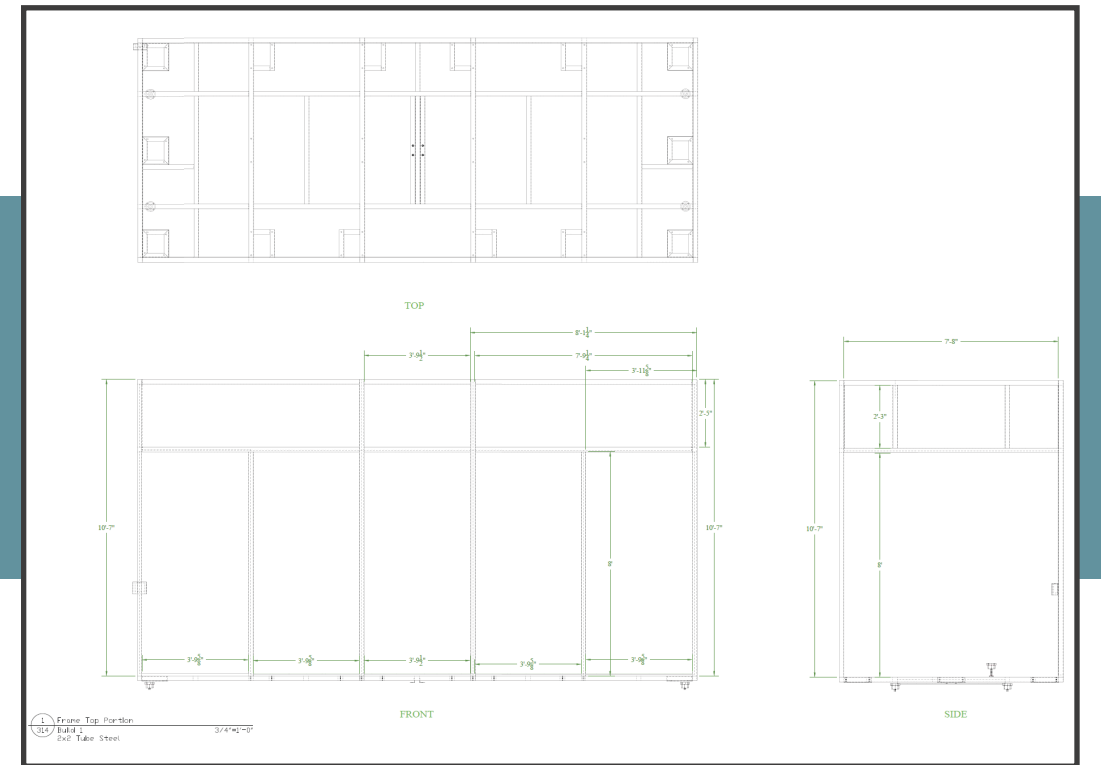
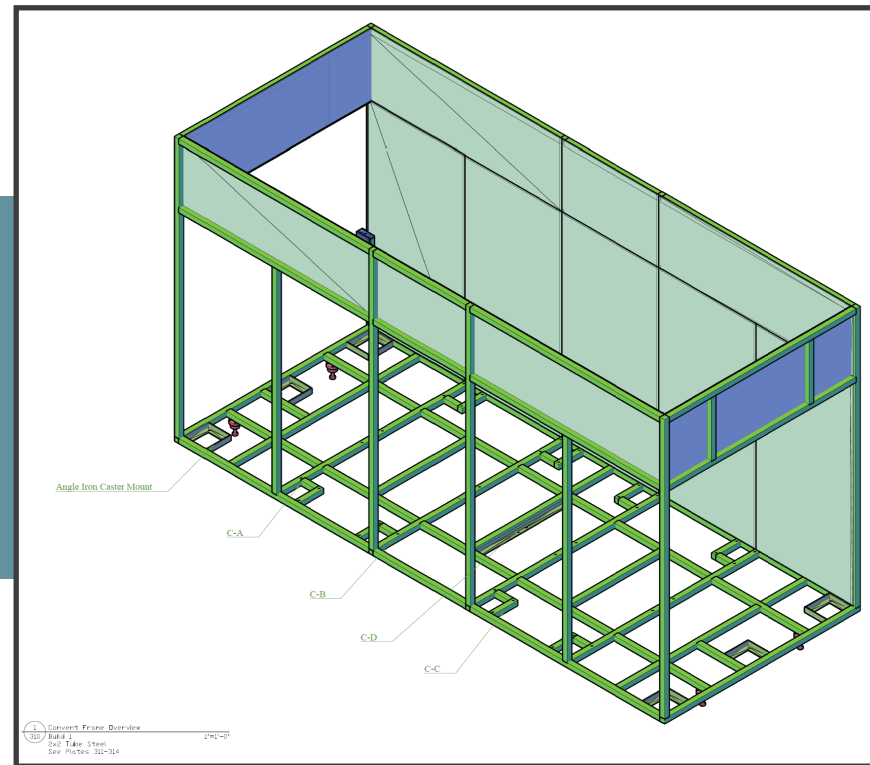
CONDUCTOR: MATTHEW AUCOIN
STAGING DIRECTOR: LOUISA MULLER
SCENIC DESIGNER: WILSON CHIN
LIGHTING DESIGNER: YUKI LINK
COSTUME DESIGNER: KARA HARMON
TECHNICAL DIRECTOR: REILLY J. RYAN
THEATRE: THE JUILLIARD SCHOOL

Served as the primary scenic point person for a large-scale proscenium production featuring multiple rigging and automation elements. Oversaw a rotating wagon on a removable trap-room pivot, an upstage iris on EEE track, a kabuki drop, and a flown painting rigged on dual winch lines for variable trim heights, alongside manually operated scenic units. Produced both 2D and 3D drafting to support fabrication, installation, and integration with automation and rigging systems.

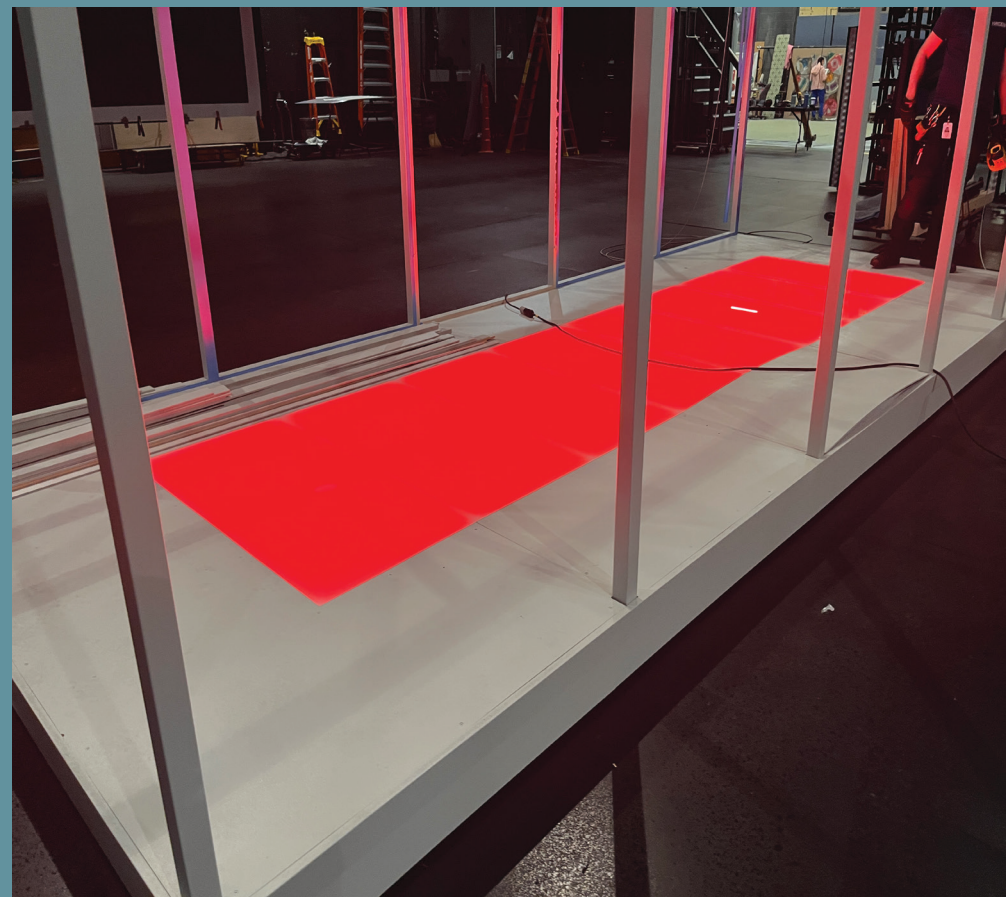
Photos - Left: Production Photo. Right: Scenic Designers Model Photo



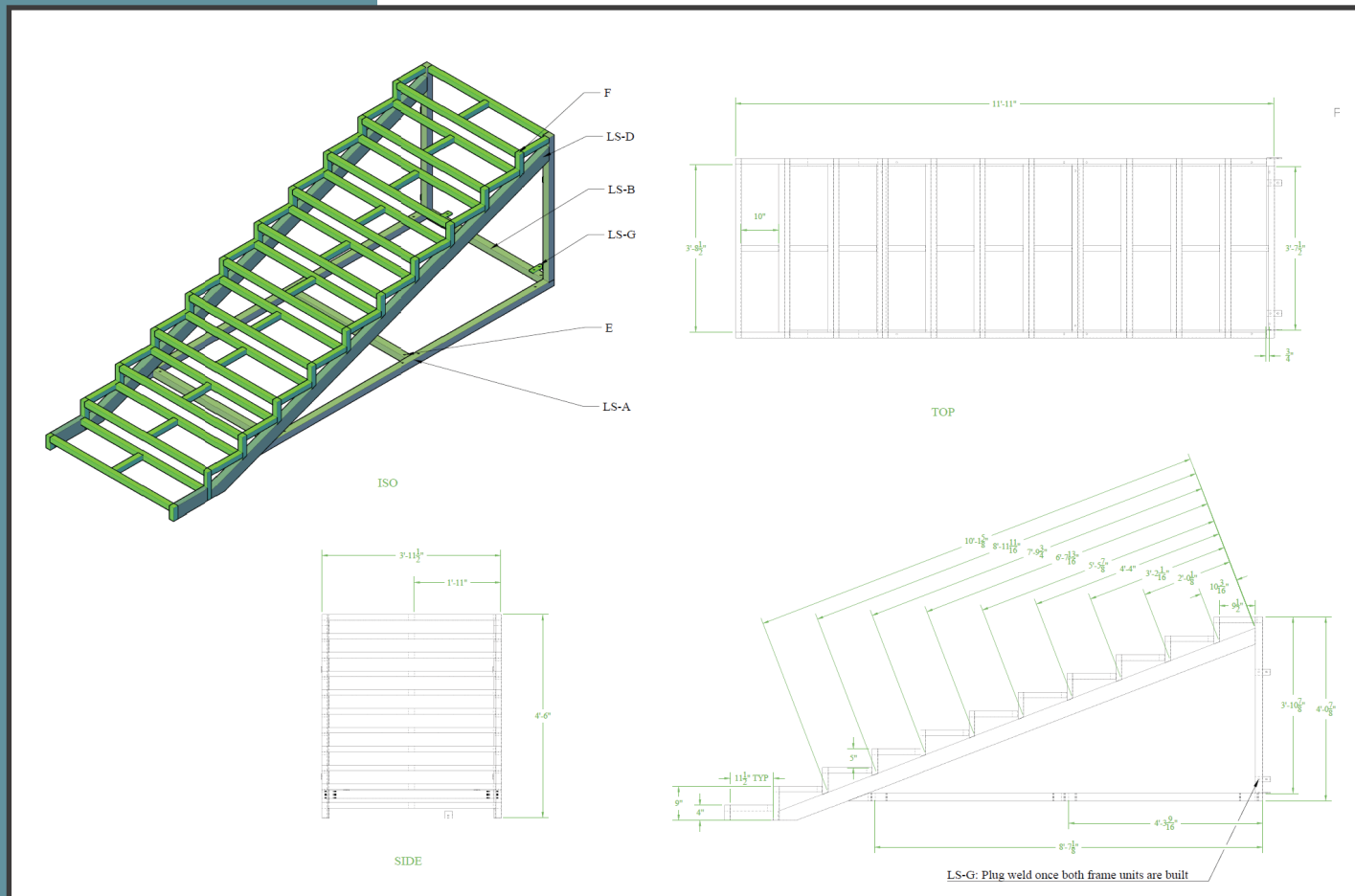
THE CONVENT



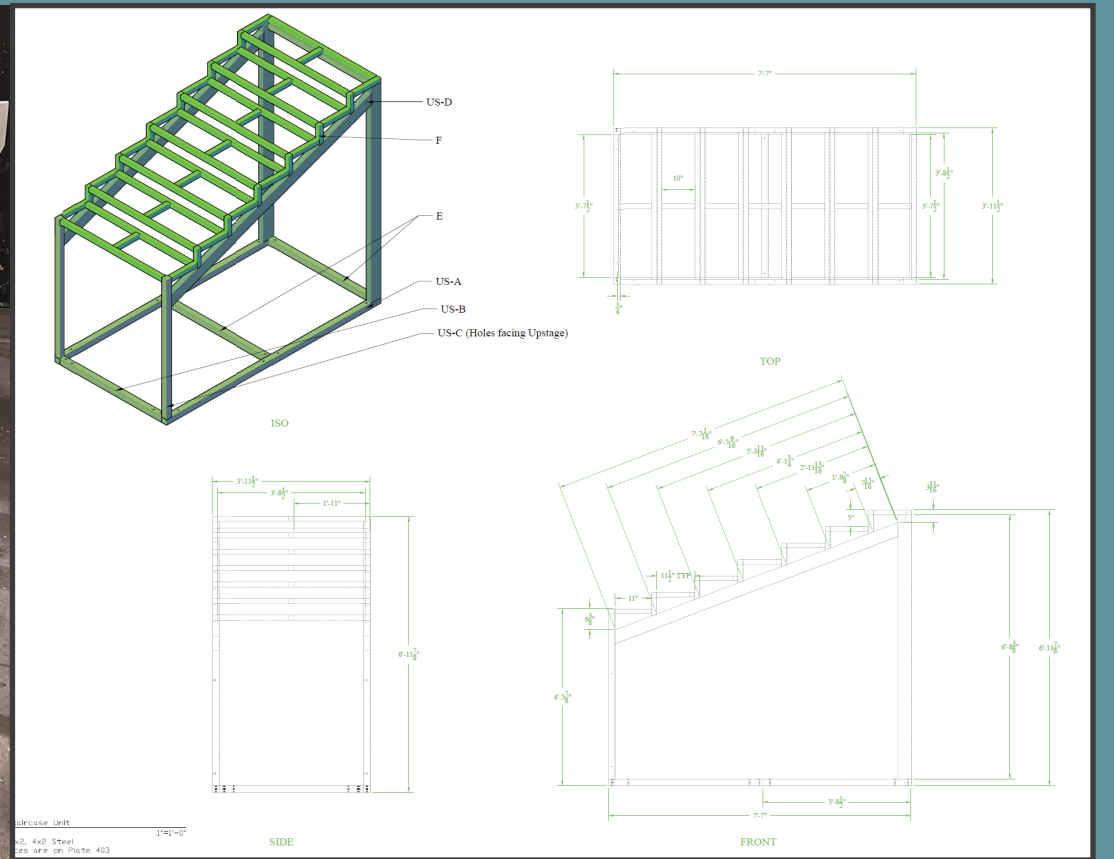
Photos - Top Left: Drafting 3D rendering Overview Plate. Top Right: Drafting Plate of frame assembly. Bottom Left: Unit Steel Frame in Shop. Bottom Middle: Covent Light Box Test during Load in. Bottom Right: Covent during load in with pneumatics access point open.



STAIRCASE



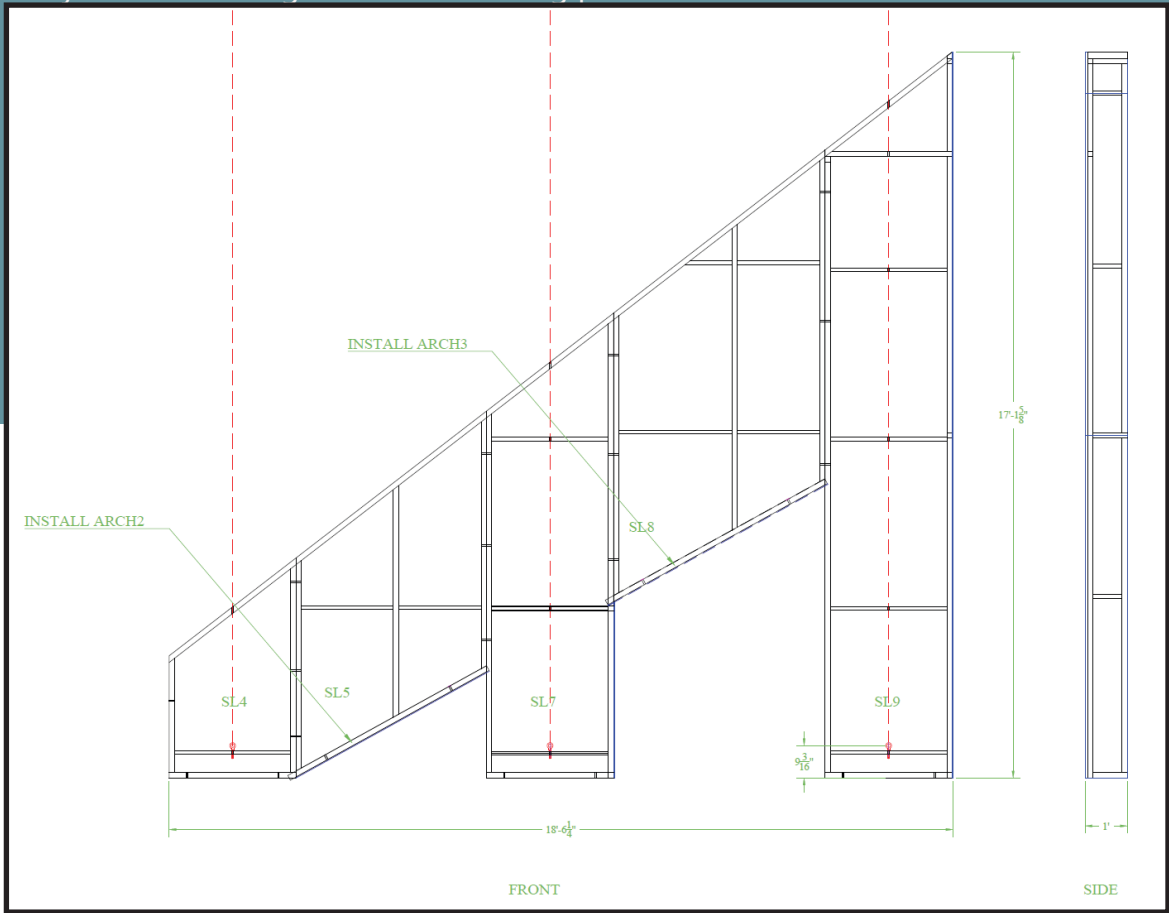
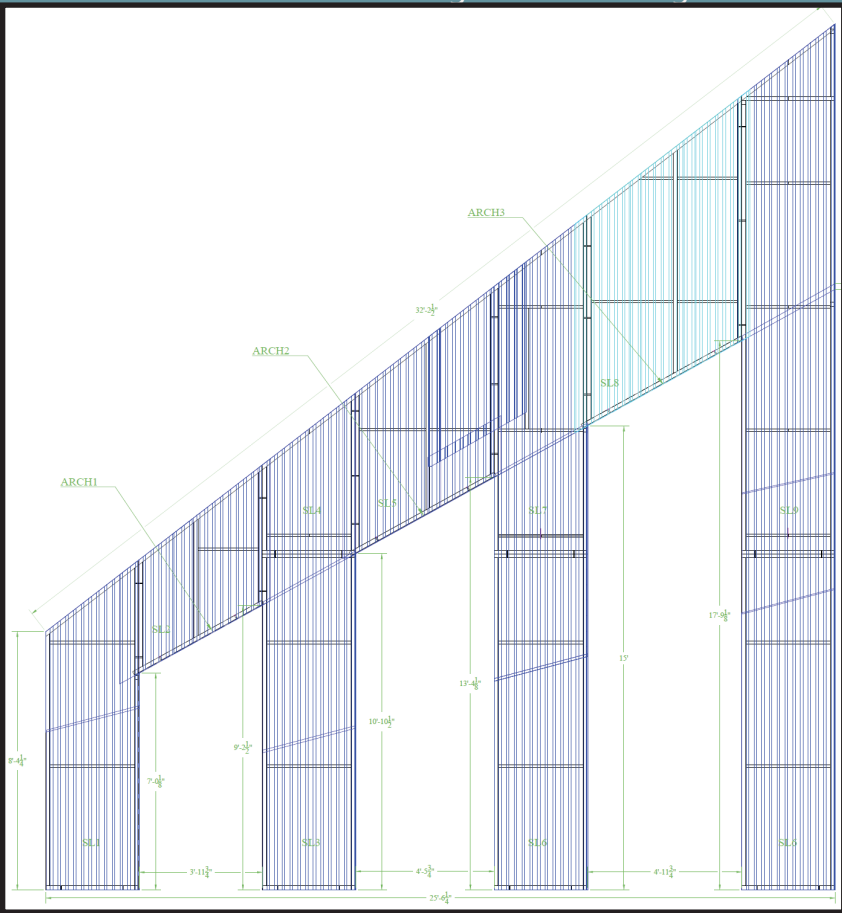
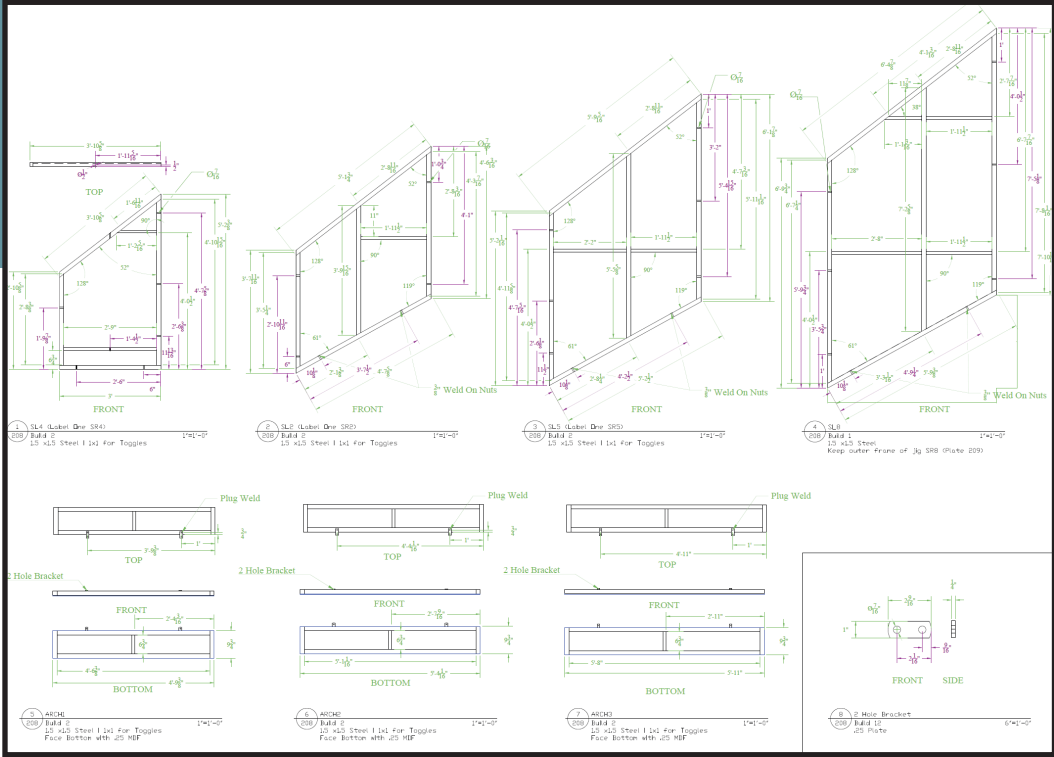
Photos - Top Left: Drafting Plate of lower staircase. Top Right: Production Photo. Bottom Left: Unit assembled in shop. Bottom Middle: Lower Half of unit in process of being painted. Bottom Right: Drafting Plate of upper staircase.





Photos: Top Left: Side Wall Frames assembled in the shop. Top Right: Production photo during dress. Bottom Left: Drafting Plate of side wall frames. Bottom Middle: Drafting Plate of Corrugated Material layout. Bottom Right: Load in drafting plate of side walls

SIDE WALLS



HÄNSEL UND GRETEL

CONDUCTOR: PATRICK FURRER

STAGING DIRECTOR: KEVIN NEWBURY

SCENIC DESIGNER: WILSON CHIN

LIGHTING DESIGNER: YUKI LINK

COSTUME DESIGNER: REBECCA KANACH

TECHNICAL DIRECTOR: REILLY J. RYAN

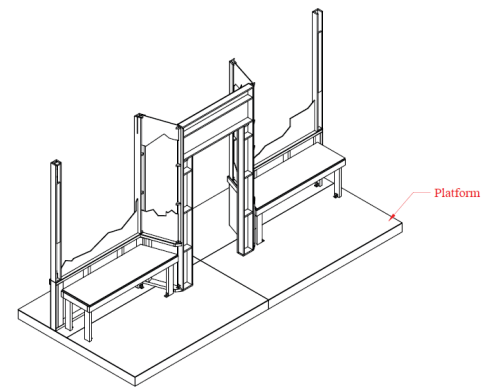
THEATRE: THE JUILLIARD SCHOOL

Served as the primary scenic point person for a 1970s New York blackout-themed production, collaborating with the TD Apprentice in an ATD capacity. Technically designed the fire escape, light boxes, 360° apartment wagon, and grid point hoist drop locations, while producing comprehensive 3D drafting to support fabrication and installation. The ATD contributed drafting for the streetlamp, subway entrance, and three flying/tracking signs.

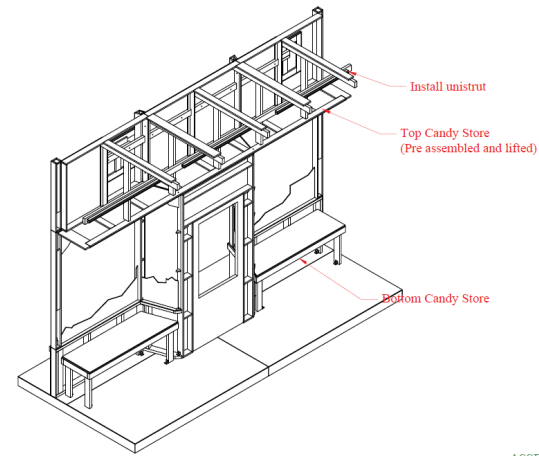
Photos - Left: Scenic Designers Model. Right: Production Photo



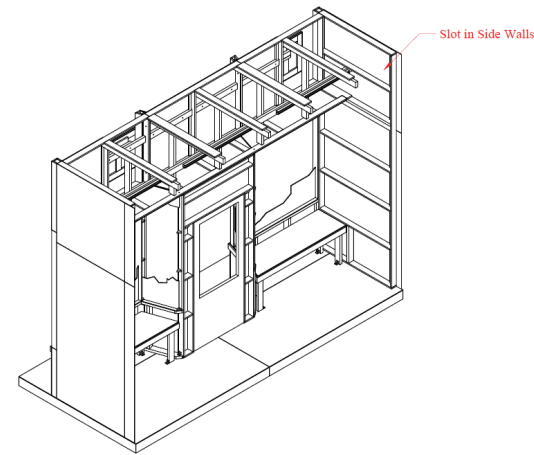
APARTMENT WAGON/FIRE ESCAPE



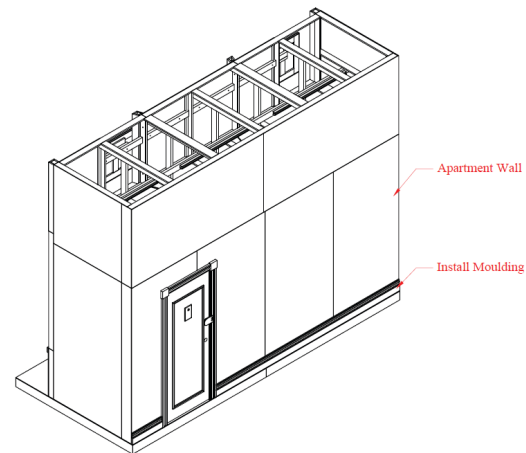
ASSEMBLY STEP 1



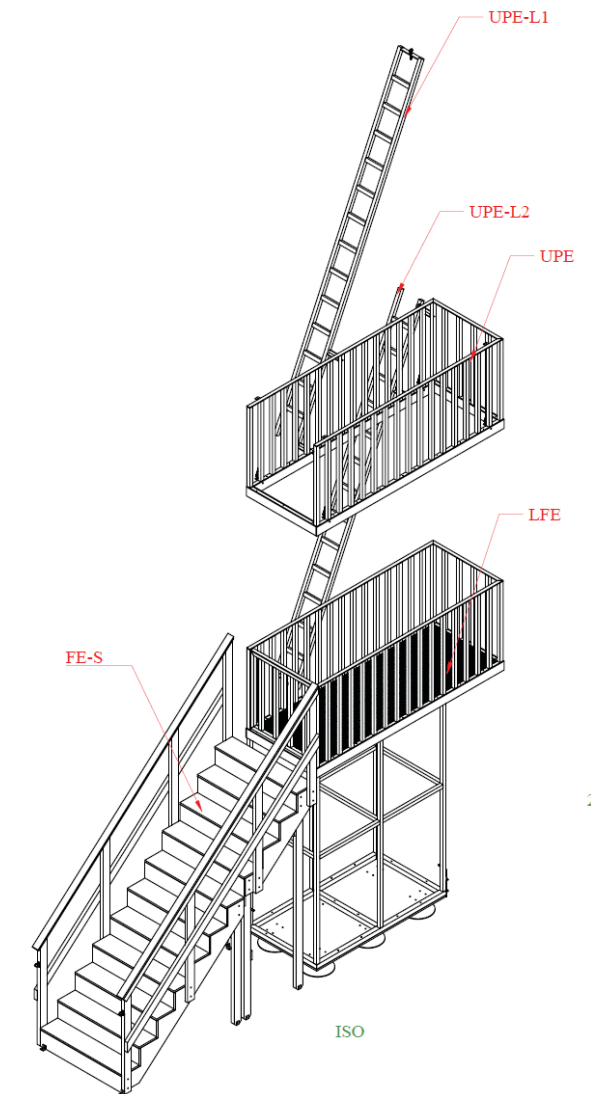
ASSEMBLY STEP 2



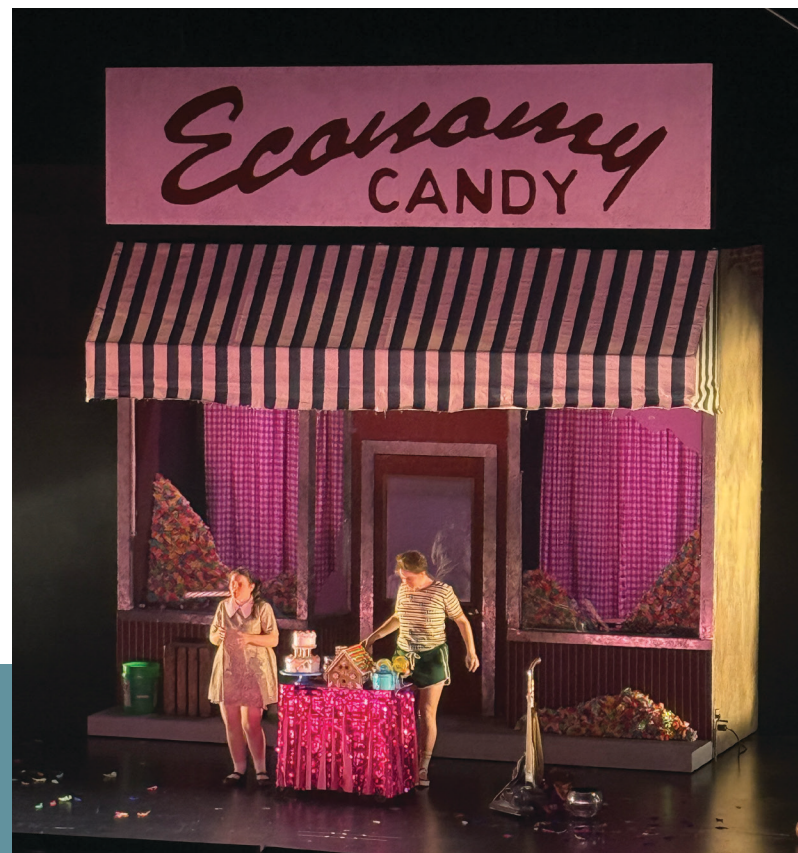
ASSEMBLY STEP 3



ASSEMBLY STEP 4



Fire Escape Overview
Assemble (x1) 1/2"=1'-0"
See Plates 401-417 for Details
Stair Unit lives offstage right. LFE plays onstage 360 degrees
LFE moves with 1 performer on the unit
UPE and ladders are hung off of winches and ropes



Photos - Top Left: Drafting Overview of Apartment Wagon Assembly. Middle Left: Fire Escape during load in. Middle Right: Drafting Plate of Fire Escape. Bottom Left: Back side of Apartment Wagon with removable awning during tech. Bottom Right: Backside of apartment wagon during load In

WHO'S AFRAID OF VIRGINIA WOOLF?

DIRECTOR: MICHAEL RUDKO

SCENIC DESIGNER: JASON ARDIZZONE-WEST

LIGHTING DESIGNER: CAROLYN WONG

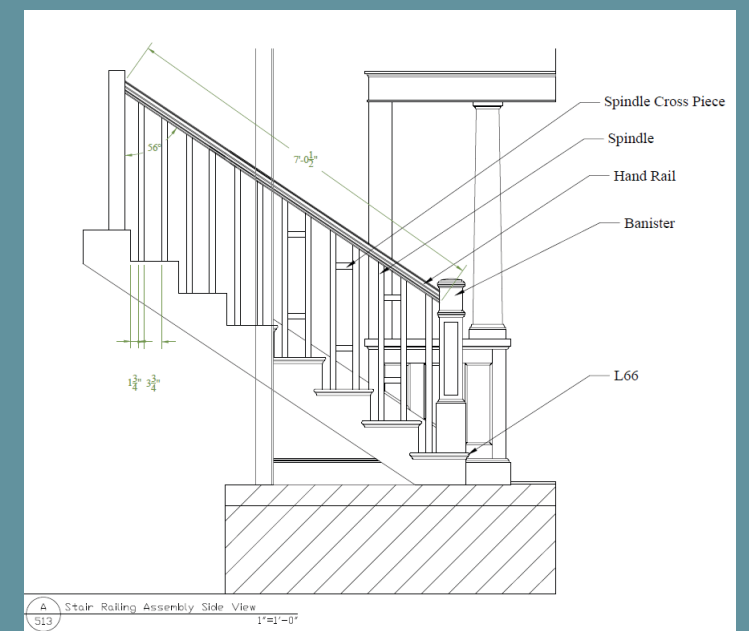
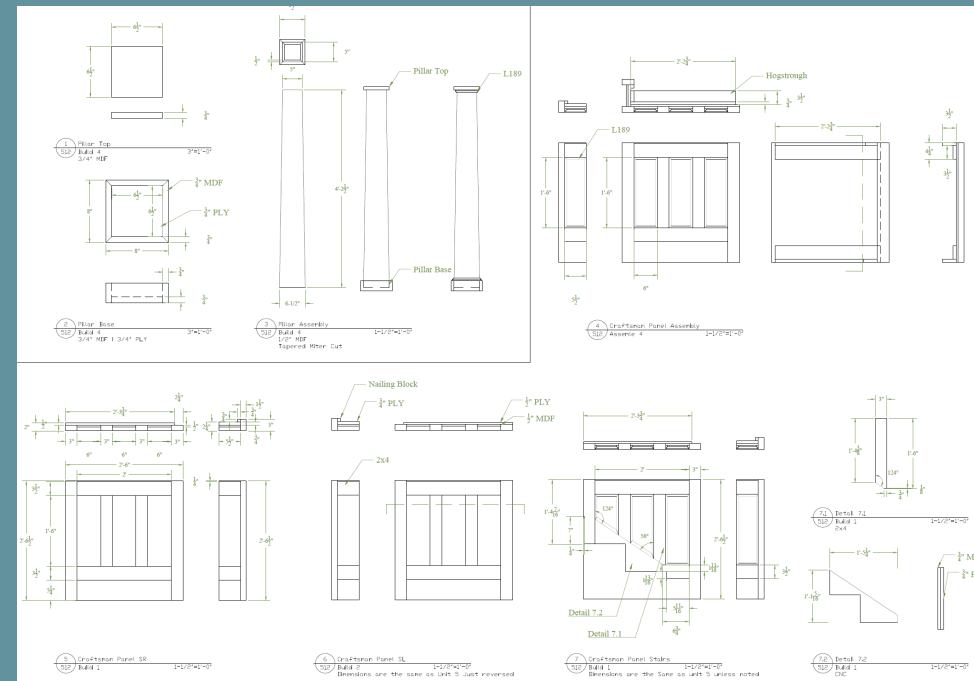
COSTUME DESIGNER: PAUL SPADONE

TECHNICAL DIRECTOR: REILLY J. RYAN

THEATRE: THE JUILLIARD SCHOOL

Photos - Top left: Drafting plate of moulding components. Top right: Drafting Plate of Staircase railing assembly. Bottom left: The set during load in. Bottom Middle: The set during tech. Bottom right: Scenic Design 3D rendering

Served as the scenic point person for a box set featuring a downstage cantilevered platform (1'-6") and two room sections, with support from the TD Apprentice on drafting. Produced detailed 2D and 3D drafting for custom mouldings, the onstage staircase, downstage walls, and platform. Oversaw fabrication of the faux wood floor, constructed from CNC-cut MDF sheets assembled in a sawtooth pattern.



MOSQUITOES

DIRECTOR: LISA PETERSON

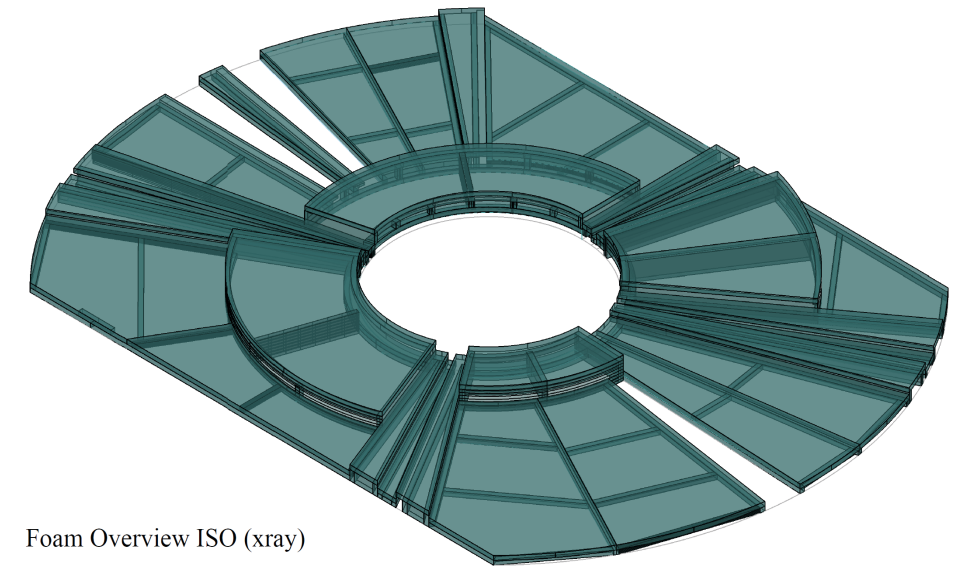
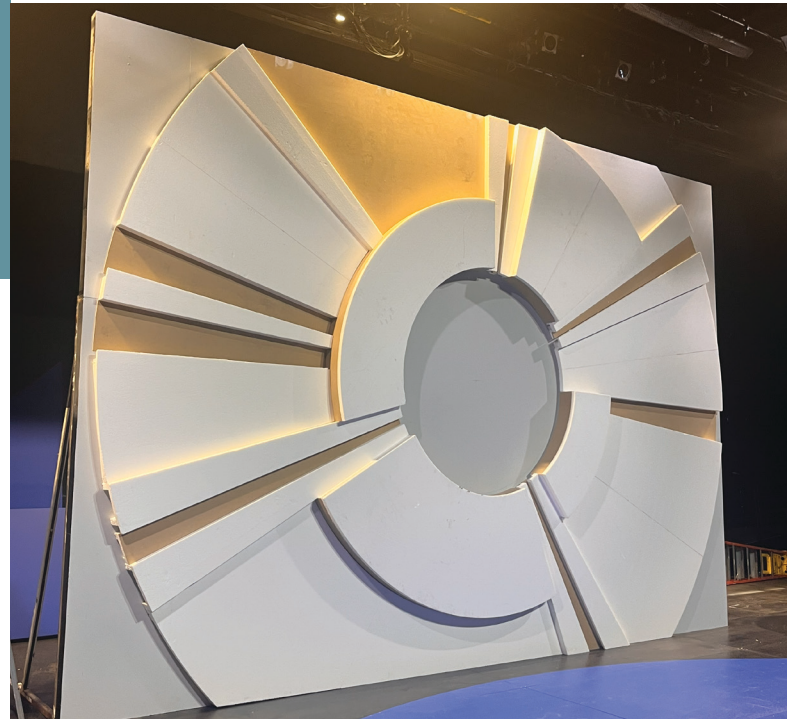
SCENIC DESIGNER: TANYA ORELLANA

LIGHTING DESIGNER: CAT TATE STARMER

COSTUME DESIGNER: DINA EL AZIZ

TECHNICAL DIRECTOR: REILLY J. RYAN

THEATRE: THE JUILLIARD SCHOOL



Foam Overview ISO (xray)

DESIGNER: Tanya Orellana	SHOW TITLE: Mosquitoes	VENUE: DT	SCALE: 1/2"=1'	320
DRAWN BY: RJR	DRAWING TITLE: Foam Overview	FILE NAME:	DATE: 09/10/2024	OF ____

Served as scenic point person and technical director for Mosquitoes, a production housed in the trust space, with support from the TD Apprentice acting as ATD. Produced 3D drafting of steel cubes and the central backwall unit to guide fabrication and assembly. The back wall was built from CNC-cut EPS foam framed at varying heights with integrated LED troughs; foam was selected for weight considerations given the scale of the central sculptural element.



Photos- Top Left: Foam Sculpture installed on wall During Load in. Top Right: Drafting 3D Overview Plate. Bottom: Production photo during Tech

COSI FAN TUTTE

CONDUCTOR: PATRICK FURRER

STAGING DIRECTOR: MO ZHOU

SCENIC DESIGNER: CHARLIE CORCORAN

LIGHTING DESIGNER: MARIE YOKOYAMA

COSTUME DESIGNER: ANDREA HOOD

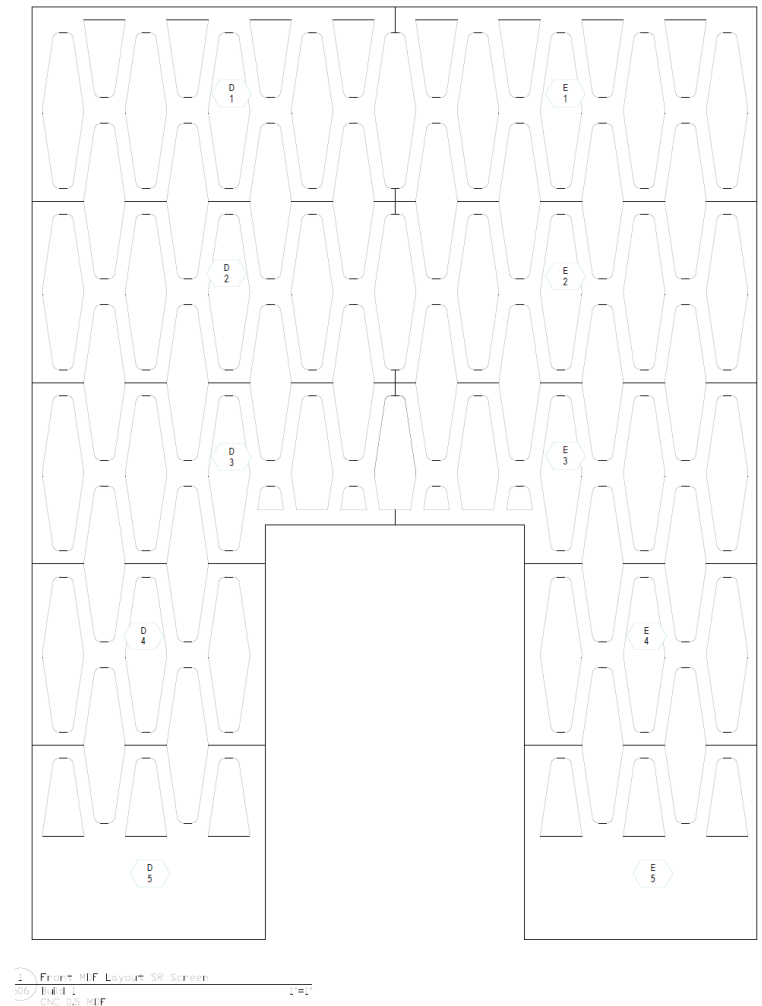
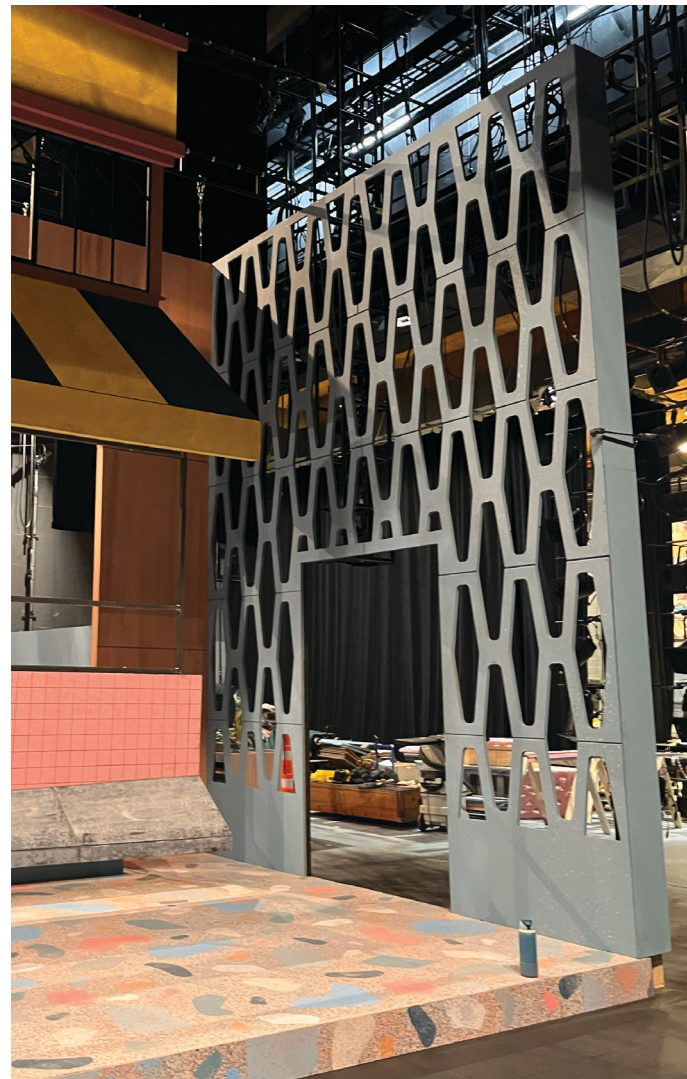
TECHNICAL DIRECTOR: JUSTIN ELIE

ASST. TECHNICAL DIRECTOR: REILLY J. RYAN

THEATRE: THE JUILLIARD SCHOOL

Served as the technical designer for the open blue side walls, addressing the challenge of perforated panels with limited opportunities to conceal framing. Designed a 1.5" x 1.5" steel outer frame with double-layer CNC-cut ½" MDF facing to overlap sheetgood seams. During load-in, the unit was stack-built in two sections, with front-facing material attached in top and bottom halves to ensure structural integrity and alignment.

Photos - Top Left: Unit during Load in. Top Right: Drafting signifying one layer of the CNC sheet layer. Bottom: Scenic Designers 3D rendering

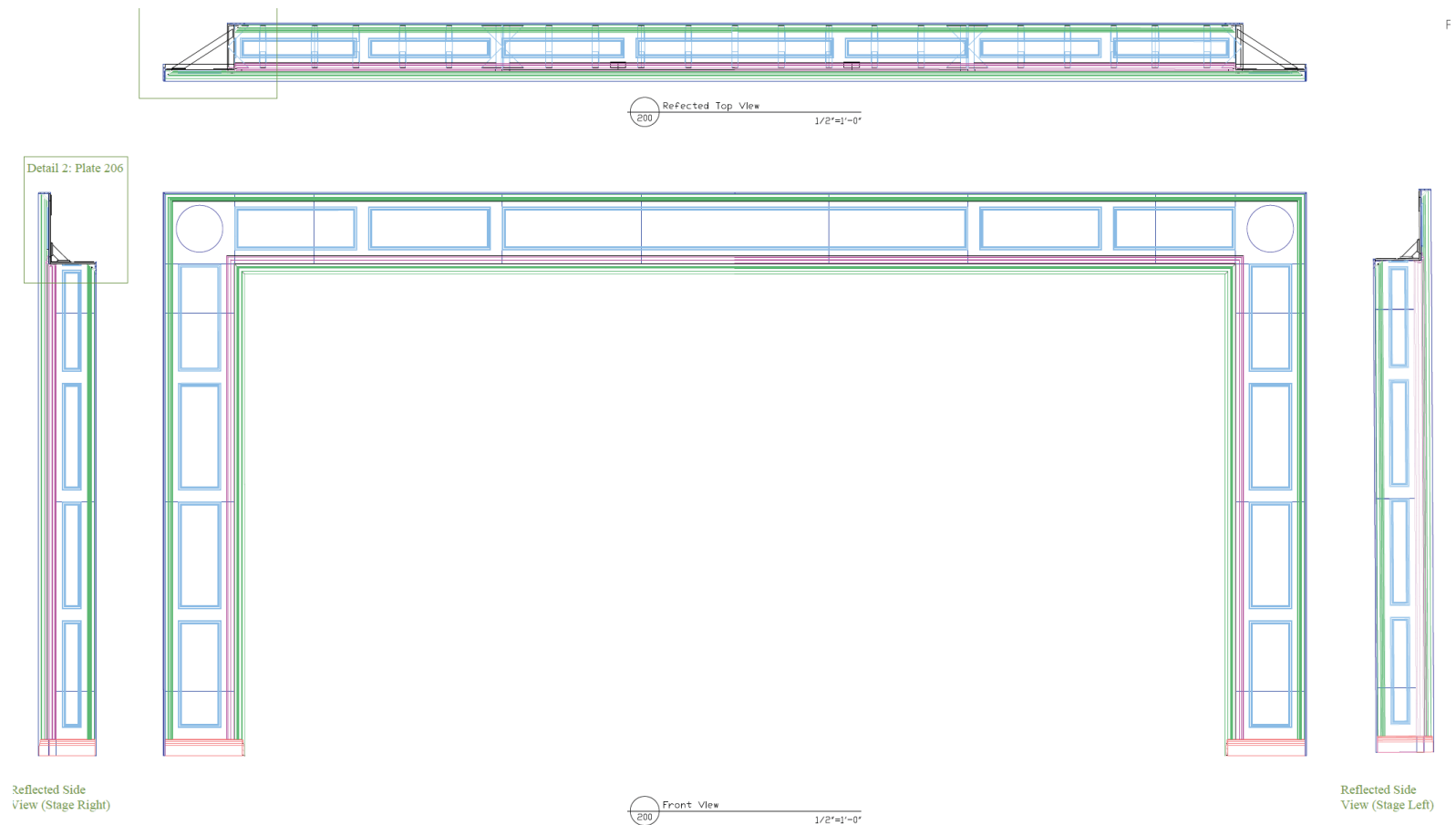


LA CLEMENZA DI TITO

CONDUCTOR: NIMROD PFEFFER
STAGING DIRECTOR: STEPHEN WADSWORTH
SCENIC DESIGNER: CHARLIE CORCORAN
LIGHTING DESIGNER: KATE ASHTON
COSTUME DESIGNER: SARA TOSETTI
TECHNICAL DIRECTOR: JUSTIN ELIE
ASST. TECHNICAL DIRECTOR: REILLY J. RYAN
THEATRE: THE JUILLIARD SCHOOL

Served as scenic point person for the proscenium arch of La clemenza di Tito, a unit approximately 50'-0" wide by 30'-0" tall with ~800 linear feet of moulding. Technically designed the arch to break into nine sections: five pieces forming the header, half cheeseboro mounted to a forestage truss on two chain motors, and four pieces forming the legs. Produced detailed drafting to guide fabrication, and oversaw stack-built assembly during load-in to ensure precise alignment and safe rigging.

Photos - Top: Drafting Plate: Overview of Unit highlighting the moulding. Bottom: Final product during a technical session.





MEET REILLY

Born and raised in Austin, Texas, Reilly has long been driven by a passion for the arts. She graduated summa cum laude from Otterbein University with a BA in Theatre and minors in Dance and Arts Administration before relocating to New York City. After a period of freelancing and a summer stock season, Reilly joined The Juilliard School as a full-time staff carpenter, where she fabricated theatrical scenery for approximately ten productions, utilizing her woodworking and MIG welding expertise.

Within a year, she was promoted to Assistant Technical Director. In her current role, Reilly contributes to project management, technical design, drafting, and cross-departmental coordination, often leading two to three productions per semester across drama, opera, and dance.

Reilly is currently pursuing her OSHA 30 certification and laying the groundwork toward earning her ETCP Rigger – Theatre certification. Outside of work, she enjoys going to the movies, listening to music on long walks, and getting lost in a good dystopian fantasy novel.



512.988.9697



RYAN.REILLYJ@GMAIL.COM

WWW.REILLYJRYAN.COM